

Virtel Web Suite 4.62 is Now GA

Virtel Web Suite v4.62 is both a roll-up of all software maintenance since v4.61 and the addition of many customer-driven enhancements to security, system administration, performance and mainframe-to-mainframe connectivity.

[Access the Syspertec FTP site to download 4.62 for z/OS, z/VSE or VSEn and/or contact support@syspertec.us to arrange a time to review the 4.62 upgrade steps and system requirements”](#)

Notable product enhancements include:

- **Easily add IBM Z MFA and SSO** and other security measures to 3270 applications.
- **Security Enhancements:** Multiple mainframe TCP-IP security enhancements, including encrypted session tokens and new options for HTTP header error code processing.
- **LU Administration:** Expanded control of LU name assignment to users based on userid, user IP address, and/or other specified criteria.
- **TN3270 IP Connections:** Ability to remotely access other IBM z Systems Telnet servers directly from within Virtel. (z/VM, z/OS, z/VSE and VSEn, IBM Series I (formally AS/400) Systems outside the organization)
- **Proxy-Friendly Settings:** New Virtel TCP/IP settings to facilitate access via a proxy.
- **Virtel Session Manager tiered menu:** Inclusion of new Virtel Session Manager tiered menu facility, including LOCK and other features to facilitate migration from legacy VTAM session managers.
- **Reveal Feature:** Model Type is displayed when hovering cursor over the Reveal area.

The screenshot displays the SYSPERTEC Virtel Session Manager Demo interface. At the top, the Syspertec Group logo is on the left, and the title 'SYSPERTEC Virtel Session Manager Demo' is in the center. On the right, system information is shown: 'VIRTEL Version 4.62', 'Line A-HTTP', 'Entry Point ALIWHOST', and 'VIRTEL62 SPU1'. Below the title is the 'Virtel Application Menu' with a tree structure of options:

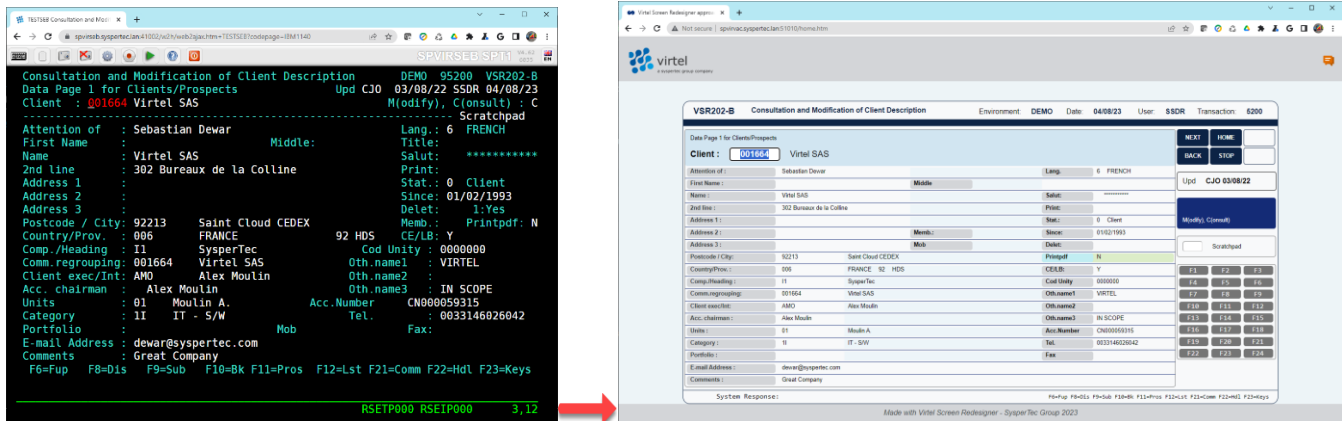
- > TSO Production System
 - TSOPAUTO Logon to TSO (Auto signon to TSO)
 - TSOP4 Logon to TSO with SEC=5
- > TSO Test System
 - TSOT Logon to Test System
- + CICS Test and Development Sandbox Regions
- > CICS Production Regions
 - PRODCIC Logon to CICS Production
- > Virtel Administration Functions
 - Admin VIRTEL administration
 - VIRTEL62 VIRTEL administration (3270 mode)
 - LineStat VIRTEL Line Status (3270 mode)
- > TN3270 IP Connections to z Servers (highlighted with a red box)
 - zOS TN3270 Client z/OS
 - zVM TN3270 Client z/VM
 - VSEnBSI TN3270 Client VSEn BSI Stack
 - VSEnCSI TN3270 Client VSEn CSI Stack
- > Applications on SYSPLX SPTPLXP1 SPT1 or SPT2
 - TSOSPT1 PF2 Logon to TSO on SPT1 in SPTPLXP1
 - SPCICP Logon to CICS CICSP on SPTPLXP1 v5r5
 - SPCICD Logon to CICS CICSD on SPTPLXP1 v5r5
 - SPCICY Logon to CICS CICSY on SPTPLXP1 v6r1
 - TSOSPT2 Logon to TSO on SPT2 in SPTPLXP1

On the right side, there is a 'Terminal Model Types' window showing 'Model 2 - 24 x 80' and 'CodePage - IBM0037 US/Canada Latin 1'.

Virtel Screen Redesigner

SysperTec is thrilled to announce the launch of Virtel Screen Redesigner (VSR), our cutting-edge solution for modernizing IBM green screens to customized Web Pages.

Say goodbye to outdated interfaces and hello to a new era of user experience. With Virtel Screen Redesigner, you can effortlessly transform your legacy applications into sleek, modern web standards without any web technology expertise required.



Key features include:

- Intuitive drag-and-drop interface
- Seamless integration with IBM mainframes: no external server required
- Rapid modernization of green screens, no-coding solution
- No disruption to existing workflows
- No middle-tier servers or client applets required

VIRTEL continues to offer free, no obligation trials of the complete Virtel Web Suite of mainframe access, UI modernization and application integration technologies, complete with expert technical support during the trial period, please contact SDS.

Virtel Online User Training Videos

SysperTec also provides basic training videos that the Virtel administrator can share with users: they can be found at: <https://ftp-group.syspertec.com/file/d/Training/>

Product Maintenance

We encourage our customers to update their Virtel product installations to the latest level to avoid experiencing Virtel product issues that have already been identified and corrected. We stand ready to support your product updates.

Virtel z/OS 4.62 PTFs

For z/OS customers who have installed Virtel V4.62, we would like to bring to your attention some important recently released PTFs applicable to Virtel.

PTF6120	VSR - INCORRECT LENGTH FOR INITIAL-COMPONENTS
PTF6115A	COMPLETES PTF6115 - 283-04C ABEND IN RACINIT AFTER TIMEOUT
PTF6115	SECU=5 - 283-04C ABEND IN RACINIT AFTER TIMEOUT
PTF6114	LOGON HANGS FOR REVOKED PASSPHRASE USER
PTF6113	SCENARIO NOT CALLED ON NON-HTTP LINE
PTF6109	MQCLOSE WHEN STOPPING AN MQ LINE
PTF6108	ENSURE DEACTIVATE FREES LU FOR REUSE

Virtel z/OS 4.61 PTFs

For z/OS customers who have installed Virtel V4.61, we would like to bring to your attention some important recently released PTFs applicable to Virtel.

PTF6114	LOGON HANGS FOR REVOKED PASSPHRASE USER
PTF6113	SCENARIO NOT CALLED ON NON-HTTP LINE
PTF6109	ADAPT TO RANDOM IP ADDRESS CHANGES
PTF6101	EXCESSIVE PASSWORD ATTEMPTS DUE TO INVALID REALM
PTF6093	USERPARM WITH SECU=5 and PassOnIdentification:True
PTF6080	IMSCONNECT NO CLOSE AFTER RC 8
PTF6075	ADAPT TO RANDOM IP ADDRESS CHANGES
PTF6074	DUPLICATE MESSAGE VIRIC52I
PTF6070	CASE\$ TESTING BLANK ON SCREEN
PTF6065	POSSIBLE INVALID HEADER IN 304 RESPONSE
PTF6063	RULESET NOT INITIALIZED CORRECTLY
PTF6061	Possible memory corruption leading to exhaustion of relay terminals High-Impact PERvasive (HIPER)
PTF6060	NO UNLOAD OF ARBO KEYWORD IN ENTRY STMT

PTF6057A	REINSTATE PASSWORD EXPIRY MSG
PTF6057	SIGNON BOX, CHANGE ERR=9 AND ERR=11 BY UID/PWD ERROR
PTF6056	COOKIES ARE LOST AFTER EXITING THE VIRTEL SESSION
PTF6053C	COMPLETES PTF6053
PTF6053B	CORRECTS AN ERROR IN PTF6053A
PTF6053A	CORRECTS AN ERROR IN PTF6053
PTF6053	IF\$ SCREEN-IS-UNMODIFIED,THEN=FAIL MAY BLOCK DUE TO SNA FLAGS
PTF6052	CORRECT MDT FLAG RESET IN VIR0023
PTF6051	VIRT923E ERROR REQ: PTON - ERRNO: 00000031 (00000049)
PTF6041	S0C4-38 AFTER SNAP

Virtel z/VSE VSEn 4.61 PTFs

For z/VSE customers who have installed Virtel V4.61, we would like to bring to your attention some important recently released PTFs applicable to Virtel. (Virtel is certified with Century 21st Software)

PTF6061	Possible memory corruption leading to exhaustion of relay terminals High-Impact PERvasive (HIPER)
PTF6101	EXCESSIVE PASSWORD ATTEMPTS DUE TO INVALID REALM

Virtel z/OS 4.60 PTFs

For z/OS customers who have installed Virtel V4.60, we would like to bring to your attention some important recently released PTFs applicable to Virtel.

PTF6074	DUPLICATE MESSAGE VIRIC52I
PTF6061	POSSIBLE MEMORY CORRUPTION WHEN RULE IS ABSENT
PTF6037	POSSIBLE MEMORY OVERLAY LEADING TO ABEND
PTF6027	CLONE VALUE NOT ACCEPTED FROM PARM FIELD IF NO IP ADDR
PTF6026	B37 ON VIRSTAT FOR STATS=SMF
PTF6015A	FIX POSSIBLE ABEND CONDITION INTRODUCED BY PTF6015
PTF6015	VIRTEL CPU LOOP CAN OCCUR FOLLOWING TELNET PING
PTF6012	CORRECT MESSAGE VIR0072I FOR SILENCE MESSAGE ADDED
PTF5999	SUPPORT FOR MAP\$ FROM VARIABLE, JSON,VAR=
PTF5998	INVALID DISPLAY IN TERMINAL STATUS SCREEN
PTF5970	DISABLE LINES IF ARBO TYPE 2
PTF5961	COMPLETES 5927 ALLOW UNSOLLICITED BIND FROM AN APPLICATION LIKE IBM DEBUGGER TOOL.

PTF5958	VIRS125E MQSAEH34 VIRSV REQUEST ERROR - R15 : 0000080C
PTF5940	REMOVE QUOTES AND UC CONVERSION FROM LOCADDR KEYWORD
PTF5937	AVOID ABEND AEIV AFTER UPDATING ARBO RULES @ HIGHER VIRTEL RELEASE
PTF5927B	CORRECT ERROR IN PTF5927A
PTF5927A	CORRECT ERROR IN PTF5927
PTF5910A	CORRECTS AN ERROR IN PTF5910
PTF5927	ALLOW UNSOLICITED BIND FROM AN APPLICATION LIKE IBM DEBUGGER
PTF5918	SCENARIO DISCARD FLAG IS RESET IF APPLICATION ISSUES CLOSEDESTPASS (customer specific)
PTF5912A	CORRECTS PTF5912
PTF5912	POSSIBLE ABEND ICH409I 283-024 ABEND DURING RACINIT PROCESSING PTF FOR VIRTEL VERSION >>>> 4.60 <<<<
PTF5910	VIRPLEX STARTUP INCORRECT IN VIRTEL 4.60
PTF5909	PASSPHRASE FIX FOR NOMIXEDCASE ENVIRONMENTS
PTF5908	IMPROVE SUPPORT FOR OMEGAMON GRAPHIC CHARACTERS
PTF5904	USERPARM 100% CPU AT VIRTEL STARTUP High-Impact PERvasive (HIPER)

Virtel z/VSE 4.60 PTFs

For z/VSE customers who have installed Virtel V4.60, we would like to bring to your attention some important recently released PTFs applicable to Virtel.

PTF6061	POSSIBLE MEMORY CORRUPTION WHEN RULE IS ABSENT
PTF5982A	Correction -VSE ABEND AFTER /READ COMPLETES ON CLOSED SESSION
PTF5982	VSE ABEND AFTER /READ COMPLETES ON CLOSED SESSION
PTF5963	VSE abend on /READ on CLOSED session
PTF5931	DECLARE\$ DISPLAY PROBLEMS

W2H-DIR/DOC-DIR Update Levels Virtel v4.62

UPDT6121 is a cumulative maintenance for all files stored in W2H-DIR/DOC-DIR directories with a Virtel product installation.

6121	Keymapping enhancements and corrections
6103	Base Update level for v462

W2H-DIR/DOC-DIR Update Levels Virtel v4.61

UPDT6069 is a cumulative maintenance for all files stored in W2H-DIR/DOC-DIR directories with a Virtel product installation.

6069	Correct issues where the users have to hit ATTN key several times to return to application
6064	Fix a bug (click twice was needed on the options button)
6055	Color change in particular change the CSS names for the NOCOLOR

W2H-DIR/DOC-DIR Update Levels Virtel v4.60

UPDT6010 is a cumulative maintenance for all files stored in W2H-DIR/DOC-DIR directories with a Virtel product installation.

6058	W2H cumulative SVN update
6042	Add buttons in the toolbar for TBT WebAccess features
6035	Small Adjustments in VWA, Possible Adding of Options in the TBT400 WebAccess Toolbar
6010	Avoid the Update 6007 blocking Virtel with EDGE in IE11 compatibility mode
6007	Correct a change in the implementation of (new Date).toLocaleTimeString() in Chrome
5968	Improvement on update 5965 (TBT WebAccess) and minor correction to cAppMenu-main for favicon (Virtel WebAccess)
5965	Support for input fields with FER attribute (TBT WebAccess) and minor change in WEB2HOST.htm template (Virtel WebAccess)
5960	Enhancement of cAppMenu (PFkeys allowing to connect an application TSO, CICS, ...) Add of an option to inhibit the Copy/Paste Append Mode
5946	New VWA Key Mapping option - Make scroll up/down mouse actions customizable

z/OS, VSEn and z/VSE Product Support

Virtel v4.60 thru v4.62 are certified as compatible with all levels up to z/OS 3.1, z/VSE 6.2 and VSEn 6.3 (from 21CS). See our Web site for product support details.

<https://www.virtelweb.com/support-resources/product-support.html>

Send comments and suggestions to info@sdsusa.com.